

*All the amenities
you dream of...
and more*

A spectacular clubhouse featuring

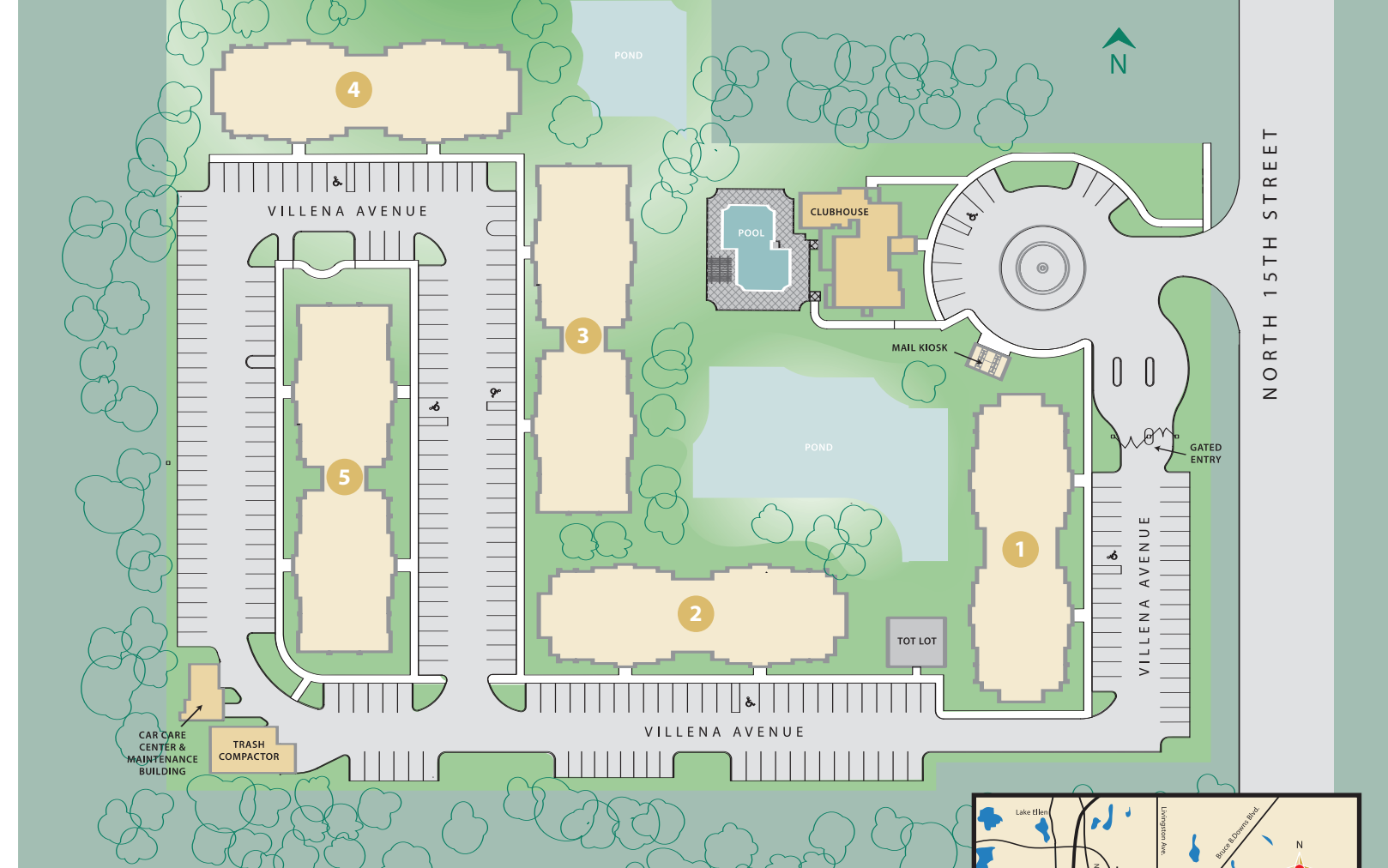
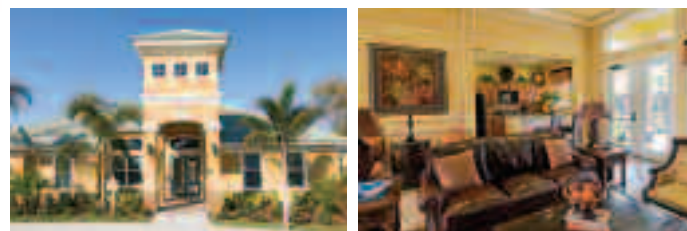
- State-of-the-art fitness center with LifeFitness cardiovascular machines & Vectra® strength training equipment
- Fun-filled game room including computers with Internet and foosball table
- Grand clubroom with refreshment center and entertainment area
- Convenient laundry center including large capacity machines

Plus a wonderland of recreation for the entire family

- Private entry gates
- Resort style outdoor pool
- Tot lot/playground area
- Covered car care center
- Beautifully landscaped grounds

Professional services that you deserve

- Professional on-site management
- 24-hour emergency maintenance
- Community social, recreational and educational services



Spanish Trace

1480 VILLENA AVENUE, TAMPA, FLORIDA 33612 • PHONE: 813-971-6410 • FAX: 813-971-6404
E-MAIL: spanishtrace@richmanmgt.com • www.spanishtracefl.com

Directions:

From Interstate I-275: Follow I-275 to exit 52, E. Fletcher Avenue. Travel east (towards USF) on E. Fletcher Avenue and cross over N. Nebraska Avenue. Turn right onto N.15th Street. *Travel approximately 1/4 mile on N.15th Street and cross over 131st Avenue. Turn right on Villena Avenue into Spanish Trace. The Leasing Center is located inside the clubhouse straight ahead.

From Interstate I-75: Follow I-75 to exit 266, E. Fletcher Avenue. Travel west on E. Fletcher Avenue passing USF. Cross over Bruce B. Downs Boulevard and 22nd Street. Turn left onto N.15th Street. *Follow directions from above.

Professionally managed by **RICHMAN PROPERTY SERVICES, INC.**



Spanish Trace

A S P E C T A C U L A R B R A N D N E W A P A R T M E N T C O M M U N I T Y



THE PALM
2 BEDROOM - 974 SQ. FT.



THE CYPRESS
3 BEDROOM - 1240 SQ. FT.



THE SANDS
4 BEDROOM - 1364 SQ. FT.

Dimensions and square footage are approximate, variations may occur in some floor plans. All amenities are subject to change.

Inside your home...

Apartment Amenities

- Spacious two, three & four bedroom floor plans
- Fully equipped kitchens with GE Energy Star appliances and built-in microwave
- Designer cherry cabinetry & faux granite countertops in kitchens and baths
- Ceramic tile floors in select areas
- Certified Green Label berber carpeting
- Separate dining area
- Two full baths
- Walk-in closets
- Full-size washer/dryer connections
- Individually controlled central air conditioning
- Ceiling fans throughout
- Custom satellite TV packages available including HD and premier channels

